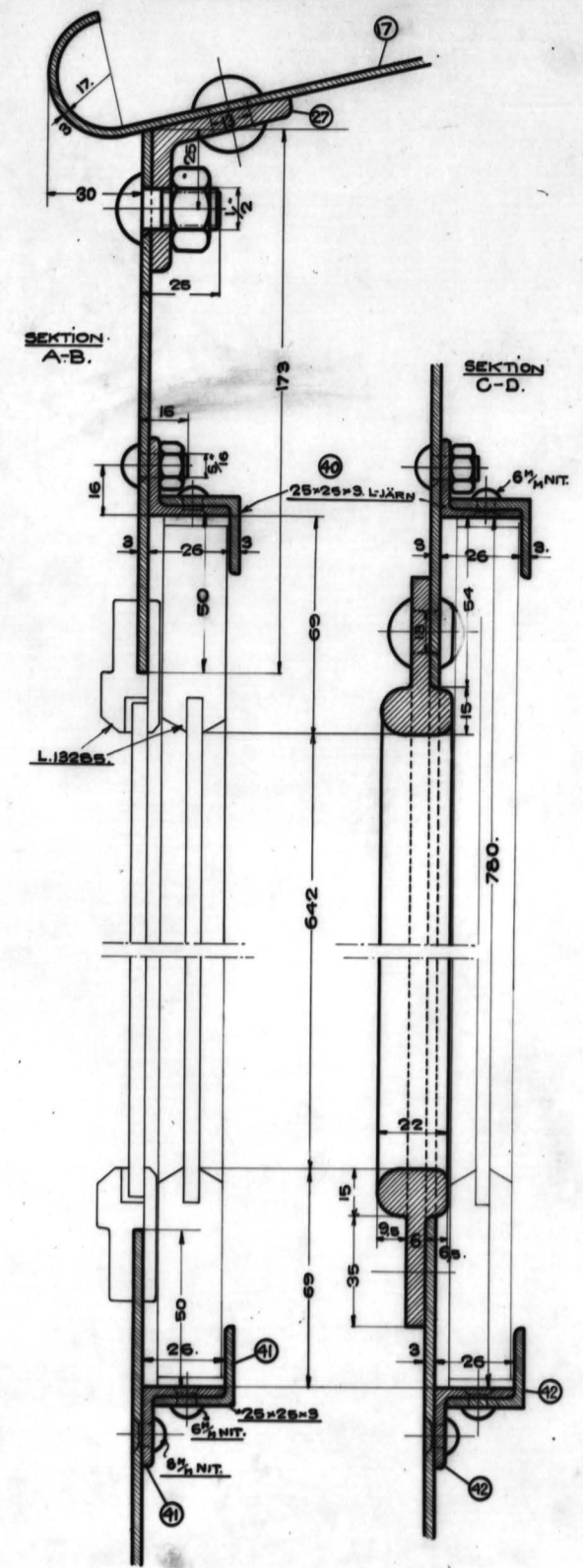
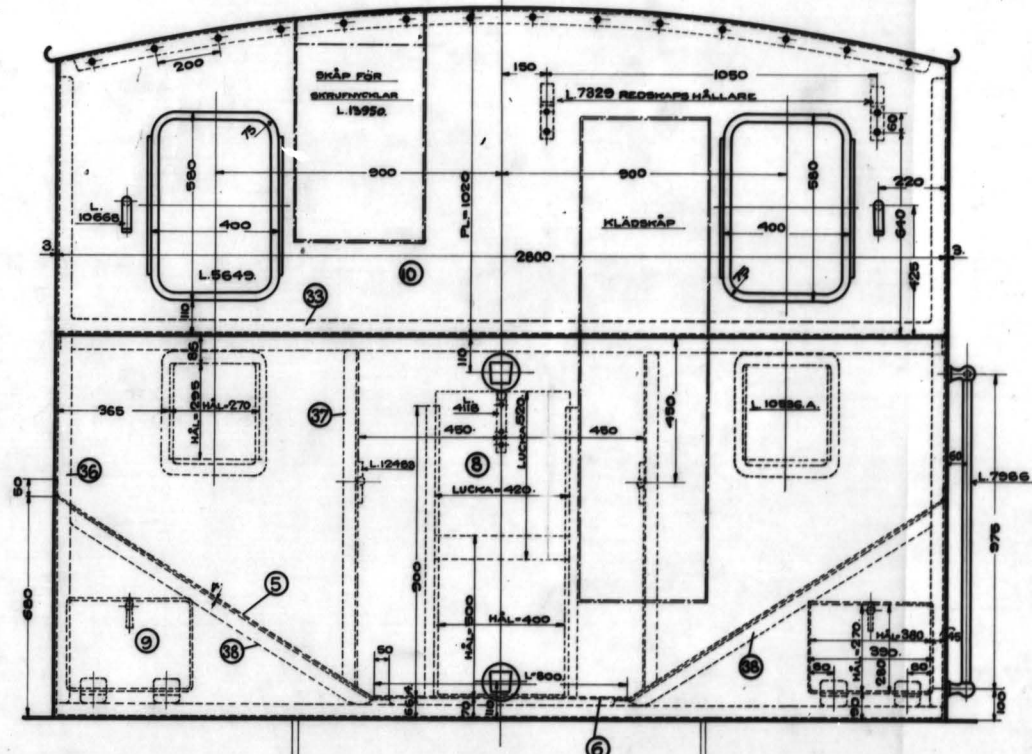
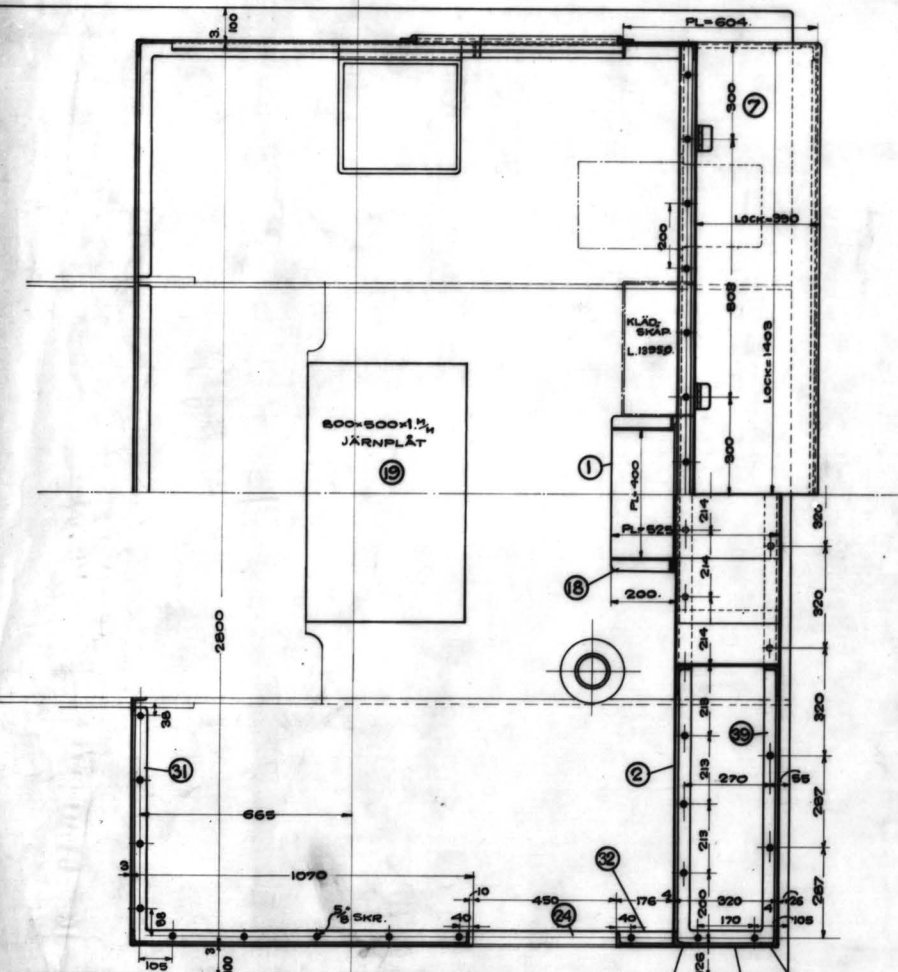
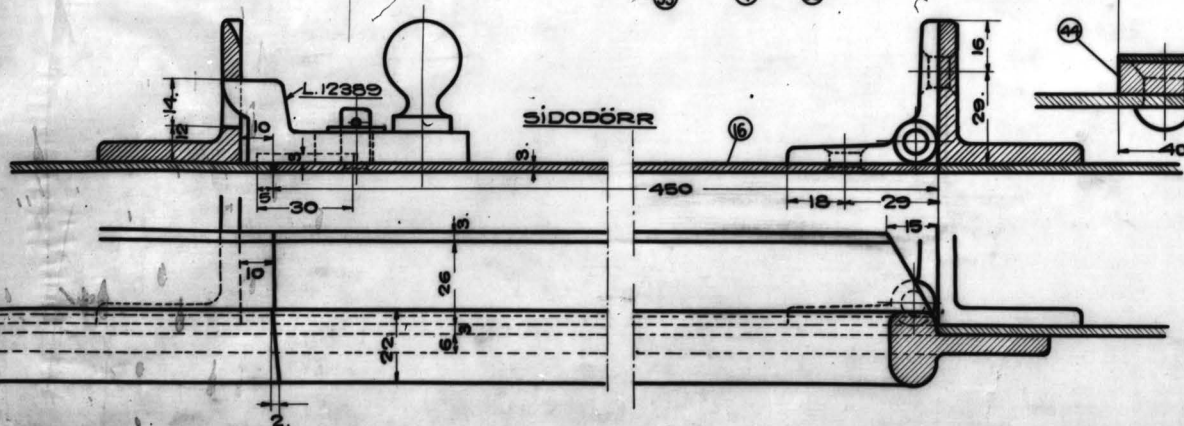
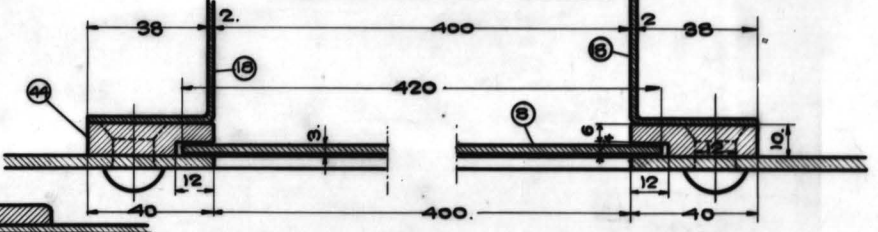


L-JÄRN = 45x45x6.



SEKTION GENOM KOLTASSET.



ST. NR	ST.	MAT.	BENÄMNING	QVANT. I 1000	ANM.
1	1	JÄRNPL.	SLITPL. I KOLTAS	535 410	5
2	1	"	FRÄMSAV. I KOLBOK	2810 190	4
3	1	"	BAKAVFV. " " "	2810 1200	"
4	2	"	SIDA " " "	1190 515	"
5	2	"	BOTTEN " " "	1300 400	"
6	1	"	" " " "	810 380	"
7	2	"	LOCK TILL " " "	1415 400	3
8	1	"	LUCKA TILL KOLTAS	530 430	"
9	1	"	" VERKTYGSLÅD	800 230	DELAS
10	1	"	BAKSKÄRM	2810 1030	"
11	1	"	FRÄMSKÄRM	2810 1190	"
12	2	"	" HERR	1035 820	"
13	2	"	SIDOSKÄRM, FRÄMRE	2055 1085	"
14	1	"	" BAK	1730 240	DELAS
15	1	"	UPPTILL	920 200	"
16	2	"	SIDODÖR	1115 460	"
17	2	"	TAK	3000 925	"
18	1	"	SKÄRM VID KOLTAS	400 250	DELAS
19	1	"	SLITPLÅT Å DÜRK	890 500	1
20	2	VALJÄRN	PL. JÄRN SKARSTRIMLA	720 80	4
21	4	"	" " " "	140	"
22	2	"	" " " "	63	"
23	2	"	" " " "	930	"
24	2	"	LJÄRN VID SIDODÖR	450	6
25	4	"	TILL TAKET	2750	6
26	2	"	" " " "	540	"
27	2	"	" " " "	745	"
28	1	"	SKR. PANNAN	650	"
29	2	"	" " " "	1050	"
30	2	"	I FRÄMRE HÖRN	1944	"
31	2	"	MOT POTPL.	2920	"
32	2	"	VID DÖR	1280	"
33	1	"	TILL BAKSKÄRM	4425	1
34	1	"	I KOLBOKEN	2800	"
35	4	"	" " " "	1090	"
36	2	"	" " " "	1145	"
37	2	"	" " " "	1100	"
38	4	"	" " " "	1130	"
39	2	"	BOTTEN	3150	"
40	4	"	TILL BEJDER	1450	3
41	4	"	" " " "	970	"
42	4	"	" " " "	450	"
43	4	"	" ANSLAS FÖR SKRUTLUCKA	80	10
44	2	"	GEJÖ FÖR KOLLUCKA	900	10
45	1	"	PLATTJÄRN VID KOLTAS	2710	5
46	2	"	" " " "	330	"
47	2	"	I SIDODÖR	875	3
48	2	"	BULBJÄRN	250	"
49	2	"	" " " "	458	"
50	-	SM-JÄRN	5/8 SKRUF M. MUTTER		
51	-	"	" " " "		
52	-	"	" " " "		
53	-	"	NAGEL EFTER BEHÖF		
54	-	TRÄ	DÜRK		

BEST. NR	BESTÄLLARE	ANM.	M-F NR
016-17.	N.N.-T. J.		04-05

TILL LOKOMOTIV.
FÖRAREHYTT OCH KOLBOK.

SKALA 1:50

L
13871

Godkänd
Müller
1916-17